

John Glenn Astronomy Park

John Glenn Astronomy Park

<https://jgap.info/>

Upcoming Programs

We do programs on Friday and Saturday nights from March through November, weather permitting.

Because we have limited space for cars, free parking passes are required on program nights.

Space is infinite, our parking area is not.

<https://registration.jgap.org/>

If the date you wish to go is marked "full" note that we often release additional passes for programs on the Wednesday before each weekend.

(The JGAP grounds are open for individual stargazing on non-program nights. Please feel free to come on in. Parking passes are not required. You may bring chairs, telescopes, cameras and tripods if you wish.)

The entrance to the John Glenn Astronomy Park is about 0.9 miles to the West of the Old Man's Cave Visitor's Center along route 664. Most visitors will take route 33 to Logan Ohio and exit on Route 664. The Hocking Hills State Park is 11 winding miles down this road.

Visitors who are coming from the southwest along route 664 will find the JGAP 3.8 miles from South Bloomingville.

Our *mailing* address is:

20294 S.R. 664, Logan, Oh, 43138

However this address, when placed in map apps or sites, such as maps.google.com, doesn't take you to the proper location. With your GPS unit or app, use the following address:

20531 OH-664, Logan, OH 43138

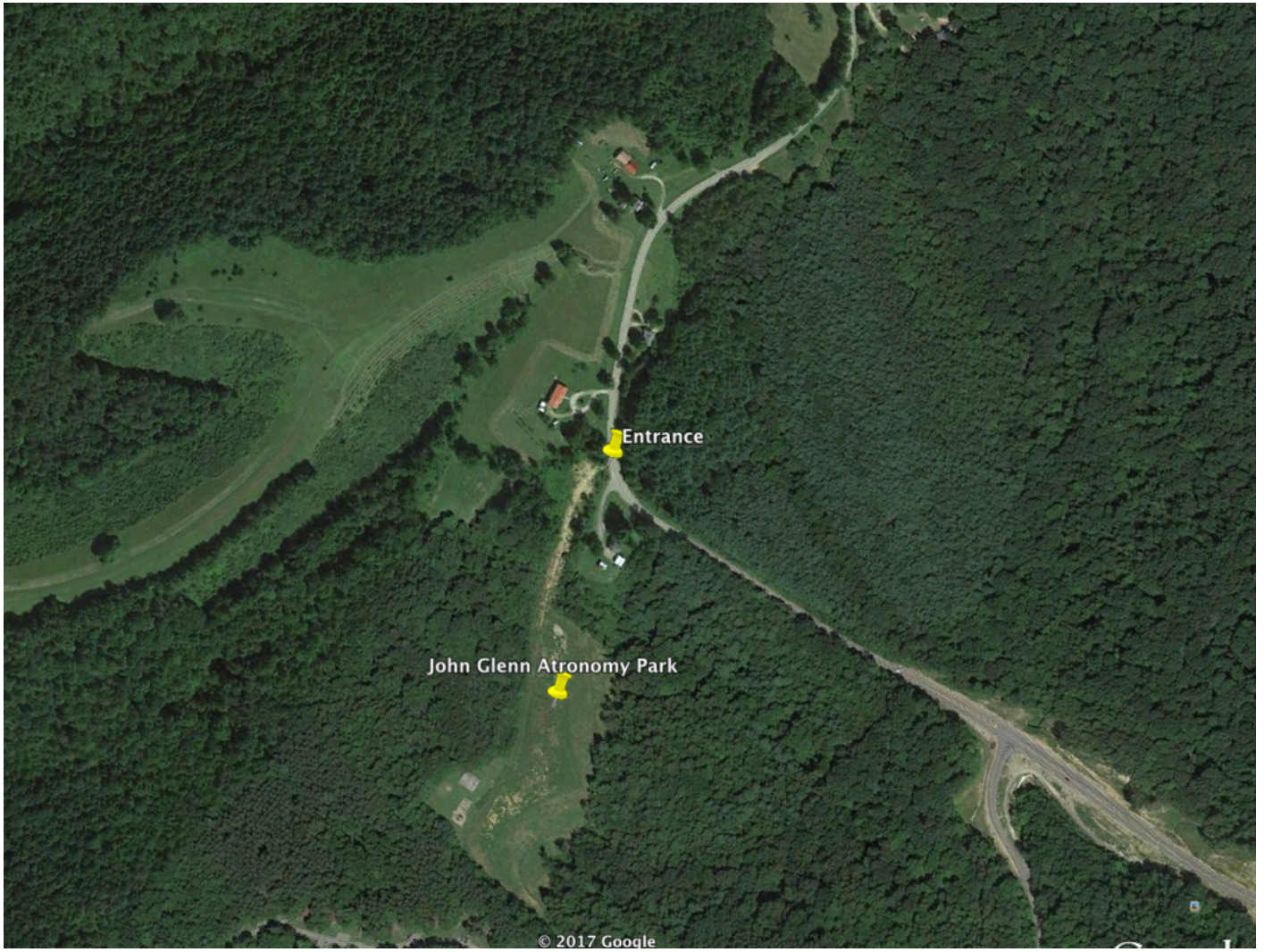
GPS devices will also bring you to the entrance with the following coordinates:

39 deg 26' N, 82 deg 33.2' W

Or, in decimal:

39.433226, -82.55412





Revision #1

Created 2026-01-17 22:05:30 UTC by Ryan

Updated 2026-01-17 22:05:31 UTC by Ryan